



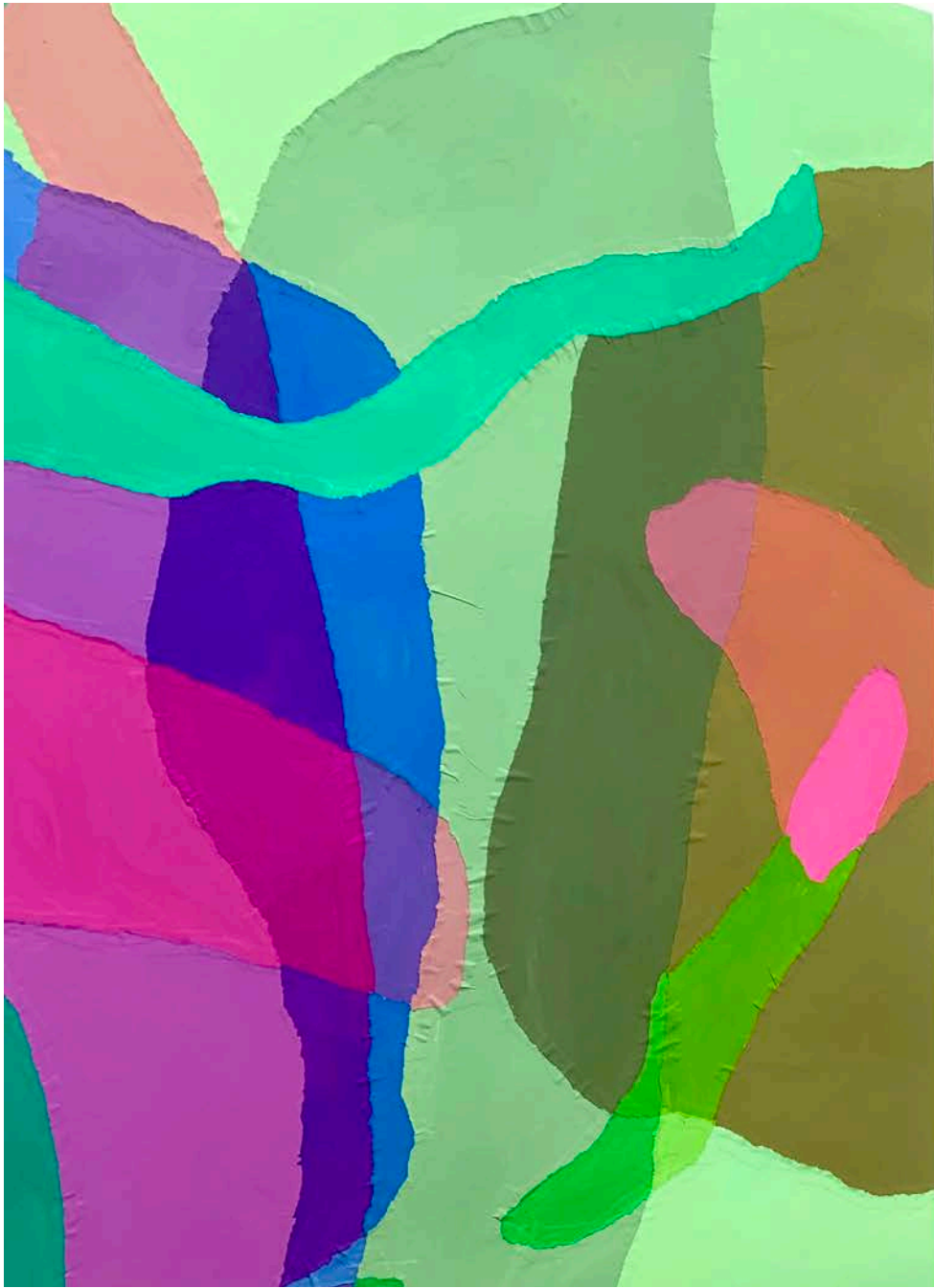
**Break surface again**

Gouache on paper, chine colle, 79 x 70 cm (99 x 75 cm mounted), 2022, SOLD

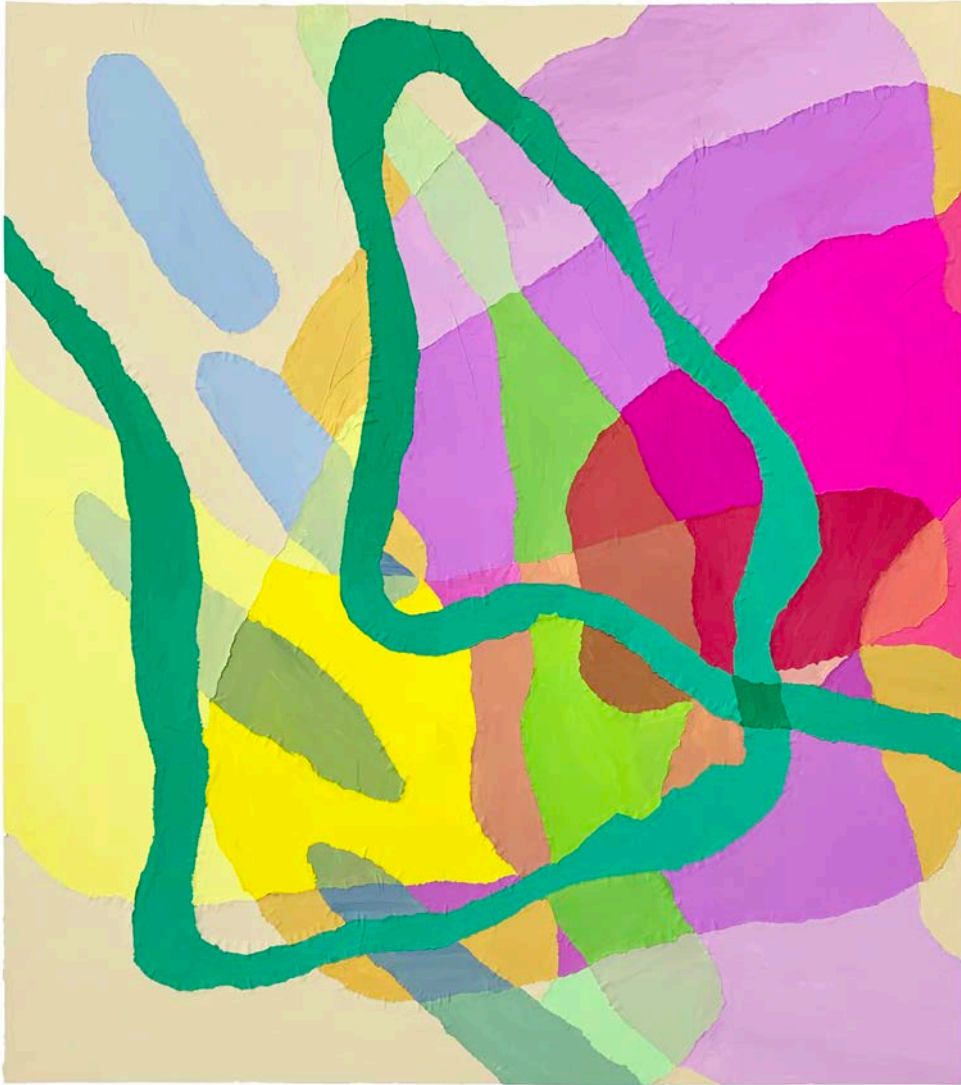


**A rip in the sky**

Gouache on paper, chine colle, 79 x 70 cm (99 x 75 cm mounted), 2022, SOLD

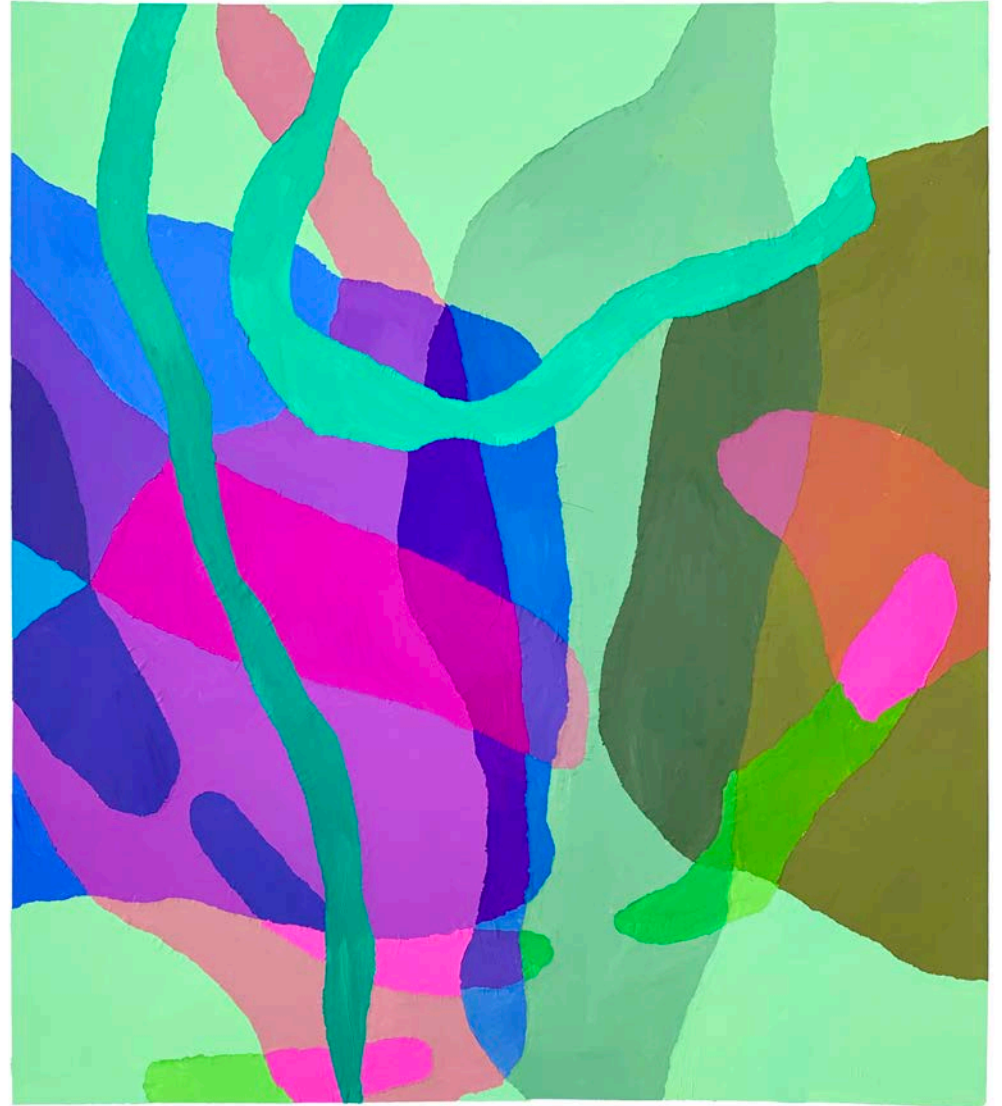


Studio installation, Thames-Side Studios, Woolwich



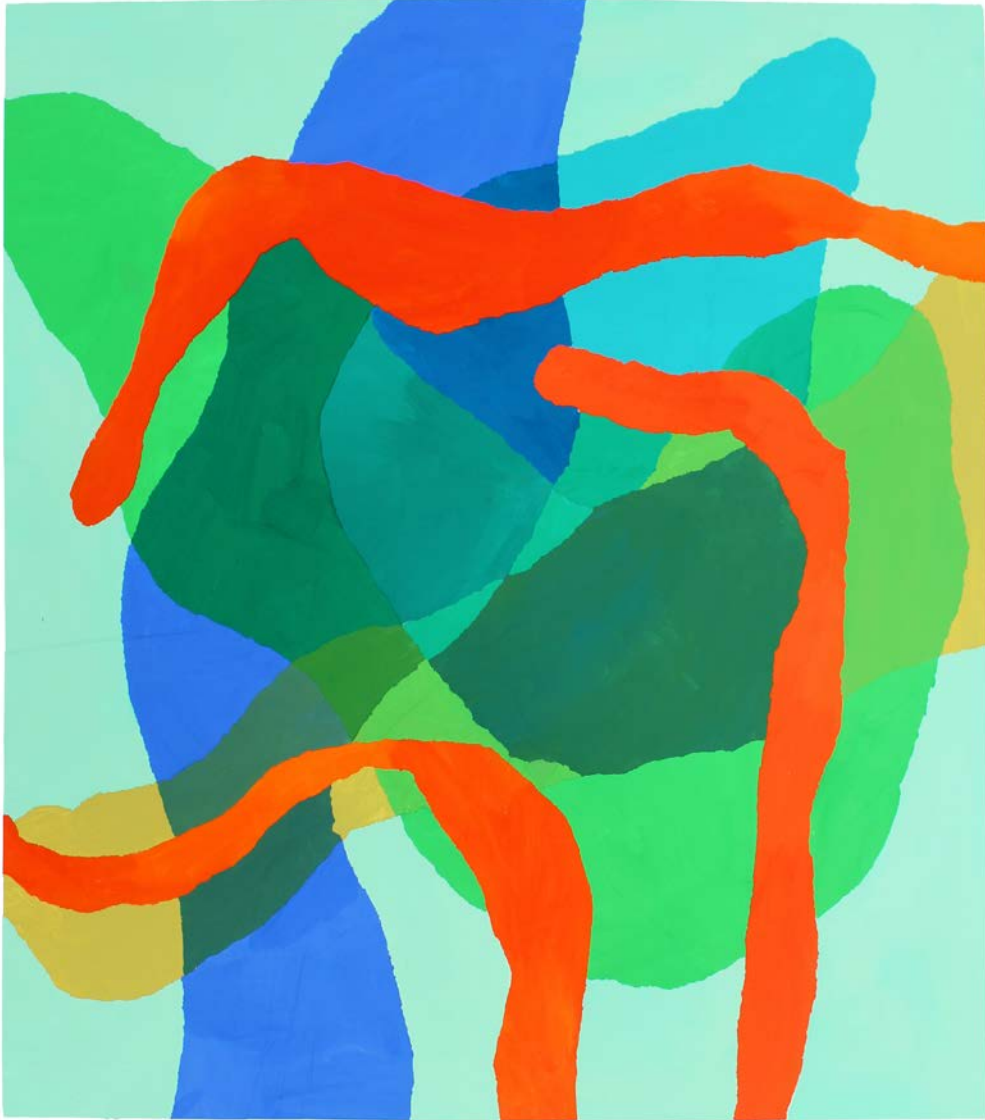
**A flash flood of the heart**

Gouache on paper, chine colle, 79 x 70 cm (99 x 75 cm mounted), 2022, £950



**Drift in the deep**

Gouache on paper, chine colle, 79 x 70 cm (99 x 75 cm mounted), 2022, £950



**Slipping into the water**

Gouache on paper, chine colle, 79 x 70 cm, 2022, £950 (planned for exhibition)

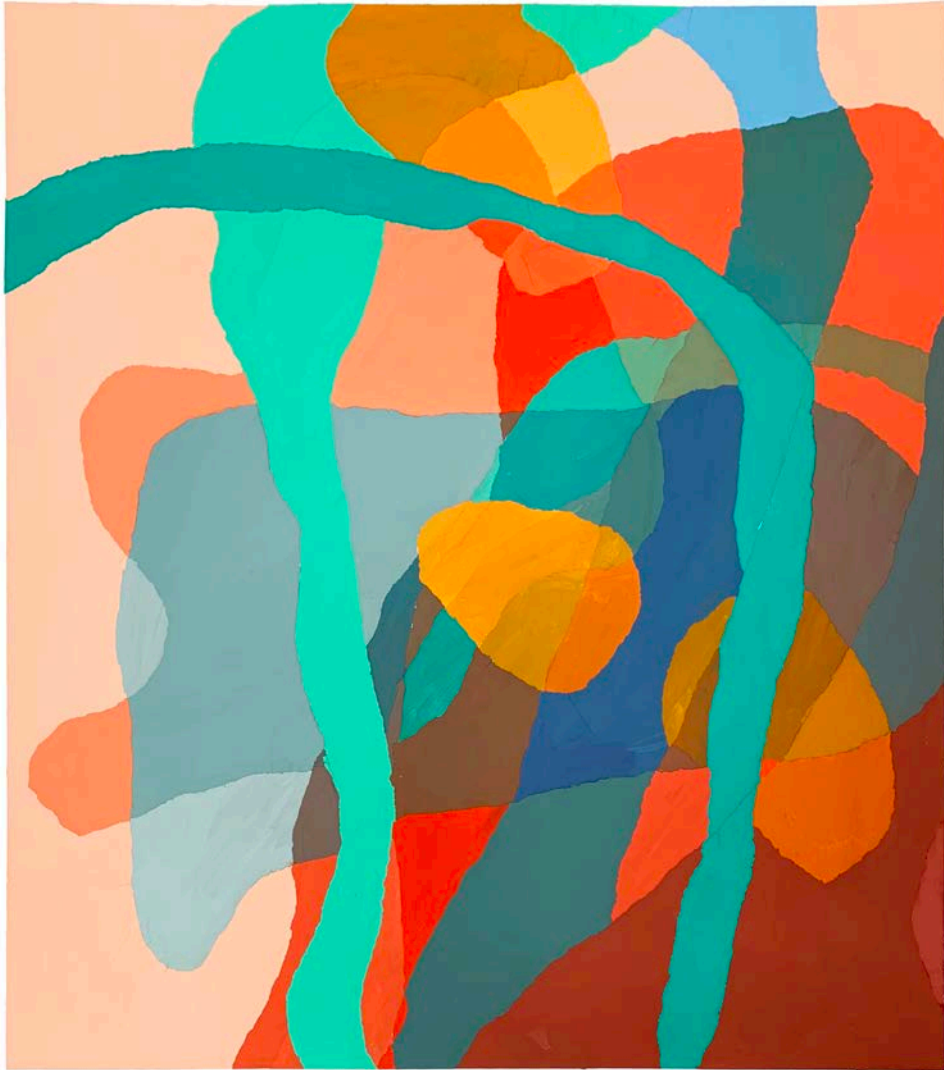


**Hot stones**

Gouache on paper, chine colle, 79 x 70 cm (99 x 75 cm mounted), 2022, £950



Studio installation, Thames-Side Studios, Woolwich



**The rest of the song**

Gouache on paper, chine colle, 79 x 70 cm (99 x 75 cm mounted), 2022, £950



**Ready for anything**

Gouache on paper, chine colle, 40 x 35 cm (52 x 47 cm mounted), 2022, £330



## Clare Dudeney

### Artist statement

My works capture the subjective experience of being through relationships of colour and shape. Tracing thoughts, memories and emotions to create abstract landscapes with the unexpectedness of encounters with nature. Weaving is a meditative process, like taking a walk with threads, there's no predetermined plan. I allow the woven paintings to build incrementally, accidents to redirect the pattern. Mixing many fine yarns to create soft transitions, like translucent watercolours. The fragmented forms revealed through this process, unintentionally reflect tender past observations of rippling water, bark and stones. The works hang, so they can move in the air and be touched. The backs show a tangle of loose threads, as a reminder that these are not manufactured, functional objects – they are fragile, made of many tiny moments.

### Biography

Clare is an interdisciplinary artist based in London. She received an MA in Fine Art from City & Guilds of London Art School in 2018 (Distinction) and was elected Chair of Students and Student Trustee (2018-19). She changed career to be an artist in 2014, after an inspirational trip to Antarctica, where she has since returned as an artist-in-residence. She has worked for 20 years in energy and climate change advocacy. Leading work on creativity and climate justice for the environmental charity Sustainability First, which includes artist residencies, discussion events, schools outreach and art & writing prizes. She also runs art and science educational workshops in primary schools, in collaboration with scientists from Cambridge University.

### Education

2017-18 MA Fine Art (Distinction), City & Guilds of London Art School  
2015-17 Practising Artist Concession Programme, Royal Drawing School, London  
2005-06 MA Environment, Politics & Globalisation (Distinction), Kings College London  
2000-03 BSc Geography (First Class Honours), Lancaster University

### Solo exhibition

2024 Living Threads, The Dot Project, Oxford  
2018-9 Shapes of Being, The Dot Project, London

### Selected group exhibitions

2024 Waterlines, Wilderness Art Collective, Royal Geographical Society, London (upcoming)  
2024 Visual Arts Scotland Centenary Exhibition, Royal Scottish Academy, Edinburgh (upcoming)

### Selected group exhibitions (continued)

- 2023 Changing Landscapes, Wilderness Art Collective, Nine Elms Gallery, London
- 2022 Art on a Postcard - Winter Auction 2022
- 2022 Patternicity, ASC Gallery London
- 2022 Soft Times Gallery, San Francisco (online)
- 2021 A glimpse of delight, Greatorex Studios, London (co-curated)
- 2021 Collection 01, The Felt Collective, London
- 2021 Tracing Earth, Paintspaces Gallery, London
- 2021 The Colour of Life, Focus Art Fair, Fold Gallery and The Saatchi Gallery
- 2021 Top 100, The Auction Collective, London
- 2021 From a safe distance, The Auction Collective (upcoming, online)
- 2021 Mindfulness, Visionary Projects, New York and Voss Gallery, San Francisco
- 2021 Green Fires, The Violet Hour (online)
- 2020 Life on Venus, The Tub Hackney
- 2020 Autumn Auction, The Auction Collective (online)
- 2020 What she didn't say, Thames Side Studios, London (curated)
- 2020 Wilderness for the mind, The Wilderness Art Collective, (online, co-curated)
- 2020 The birds are singing in the distant woods, The Violet Hour (online)
- 2019 Carpet pages II: roots, The Art Pavilion Mile End, London
- 2019 MA show 2019, City & Guilds of London Art School, London (resident artist)
- 2019 Shattered visage, The Violet Hour, Unlimited House, London
- 2019 Extreme imagination, Tramway, Glasgow and Royal Albert Museum, Exeter
- 2018 MA show 2018, City & Guilds of London Art School, London
- 2017 In Dreams, The Menier Gallery, London (curated)

### Residencies

- 2024 Sail Britain and the Wilderness Art Collective (upcoming)
- 2023 Sailing residency in South East Alaska
- 2022 Skye retreat with the Wilderness Art Collective
- 2021 Porthmeor Studios, St Ives, Cornwall (studio short-let)
- 2021 Without Boundaries Sailing Residency with Visual Arts Scotland & Marchmont House
- 2019 The Dot Project, Edition 94, London
- 2019 One Ocean Expeditions, Antarctica & The Chilean Fjords
- 2018-19 Resident Artist / Student Trustee, City & Guilds of London Art School, London
- 2018 One Ocean Expeditions, Antarctica and the Falkland Islands

### Contact

Website: [www.claredudeney.com](http://www.claredudeney.com) Email: [claredudeney@gmail.com](mailto:claredudeney@gmail.com)  
Instagram: [claredudeney](https://www.instagram.com/claredudeney) Mobile: 07791 440 700

